

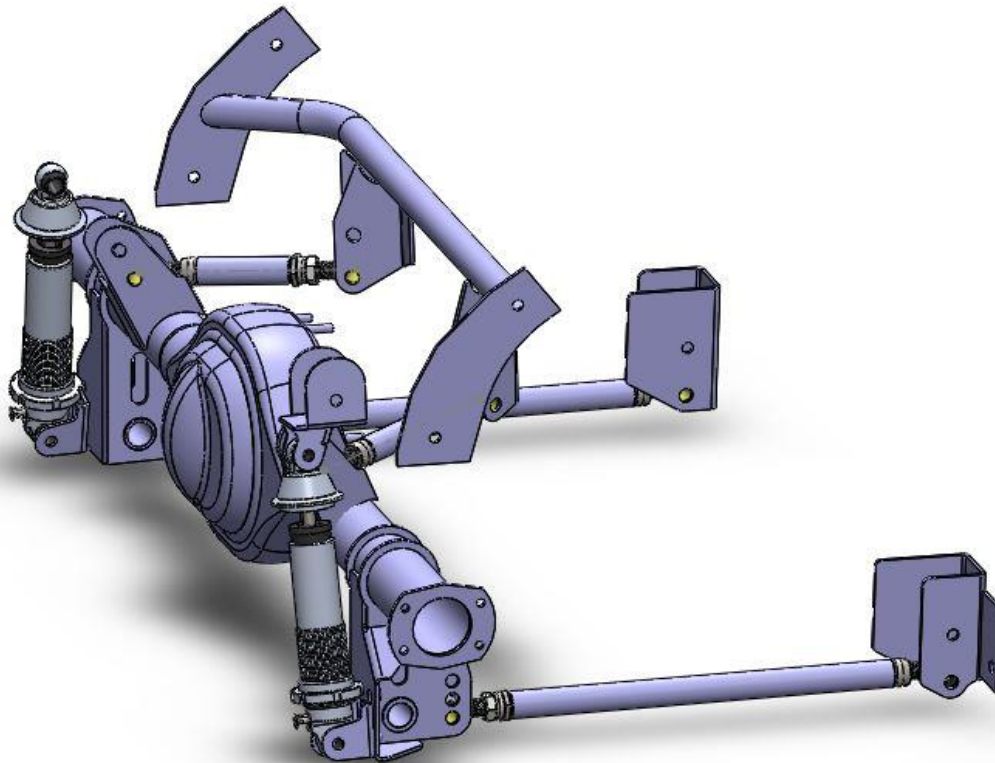


# MO-200

## INSTALLATION INSTRUCTIONS

### 70-74 E-BODY

### *4-Link Kit*



**Please read these instructions completely before starting your installation.  
Remember the basic rule for a successful installation:**

For questions on installations please call 800-841-8188 In Illinois (847) 487-0150



**\*\*\*\* Measure Twice, Bolt-in Once. \*\*\*\***

**\*\*\*\*Do Not Paint or Powder Coat any suspension components before trial fitting all items \*\*\*\***

**\*\*\*\* This kit can lower vehicle approximately 2" \*\*\*\***

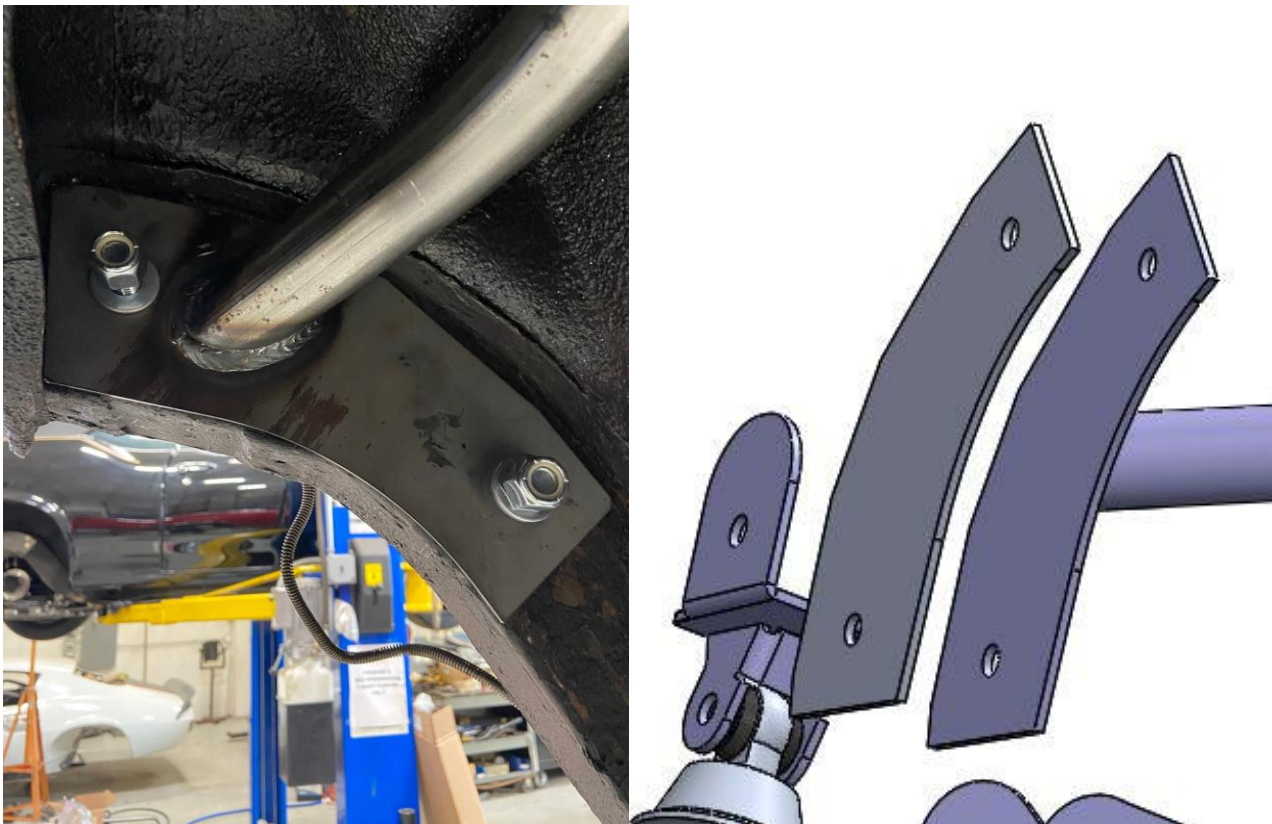
Start your installation by removing the rear seat. Jack up the car and support it on jack stands. Remove the drive shaft, e-brakes cables and rear axle assembly including leaf springs and shocks. If the brakes will be reused, the lines can be left connected to the backing plates depending on what type of axle will be used.

Remove the rear section of the exhaust system. Also remove the front leaf spring mounts, unbolt and move aside the rear brake line and fuel line

You will start by installing the front upper arm crossmember. It is located in the car by the aligning the front top of the frame rail plates to the original shock crossmember. As you can see in the pictures, the crossmember will fit flat to the floor pan of the vehicle.

Use the holes on the crossmember as your guide to drill the frame rails and floor boards. Depending on what year and model E-body some trimming may be required to brackets on the floor boards to allow the crossmember to fit properly

On the outer side of the frame rails you will use the two reinforcement plates when bolting in the crossmember, on the inside of the floorboards you will use the two large washers.



For questions on installations please call 800-841-8188 In Illinois (847) 487-0150





Next you will locate the rear shock mount saddles. Note there is a right and a left, make sure the shocks when installed angle inboard towards the center of the car. The saddles are located in between the stock shock mount crossmember. Some trimming may be required to the edge of the crossmember.



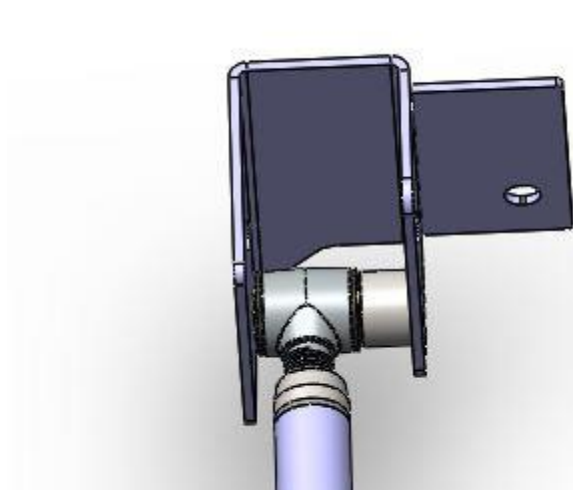
For questions on installations please call 800-841-8188 In Illinois (847) 487-0150



Install the lower link mounts into the factory front leaf spring mount location. The holes will need to be drilled for upper mounting bolts. Once they are drilled, they can be installed and bolted in place using the supplied spacer.



You can now install the lower and upper links. The lower links use the spacer at the outside of the link locating the front of the link inboard near the frame rail.

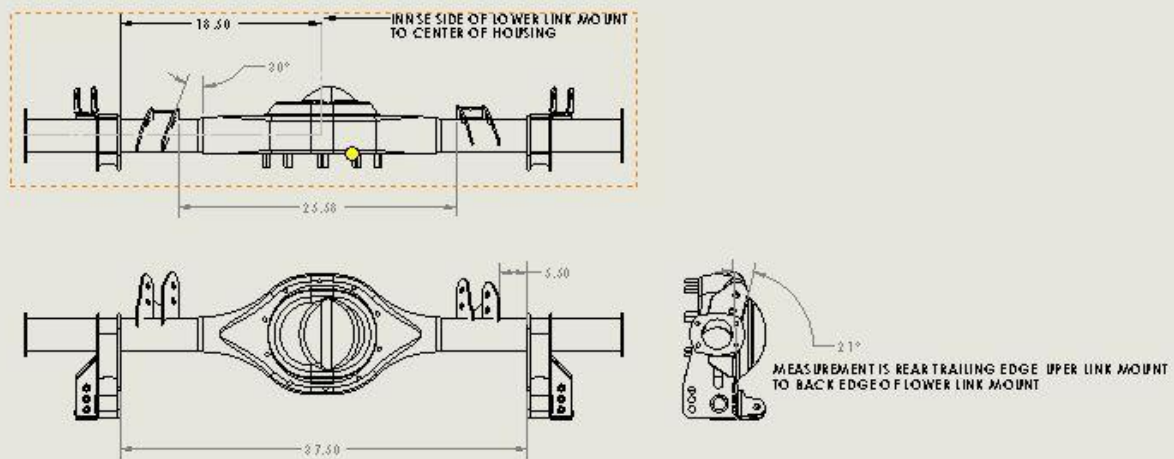


If you purchased a complete rear axle housing with the brackets already installed, you can trial install it now.

If you are installing the brackets on your own housing, see measurements attached. The two lower link mounts will need the upper portion cut off to install on a factory housing. See pic below. Be sure to tack the upper and lower mounts only on the housing first and test fit in the vehicle before fully welding them onto the housing.

For questions on installations please call 800-841-8188 In Illinois (847) 487-0150

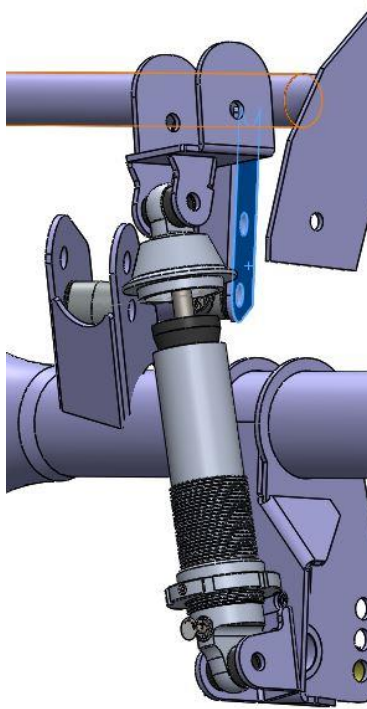




For questions on installations please call 800-841-8188 In Illinois (847) 487-0150



Position the rear axle housing in place and install the links into the brackets on the housing. Assemble the coil springs onto the shock assemblies and install them into the upper mounts and onto the housing using the spacers and lower shock mounts supplied. Be sure the lower mounts are correct there is a right and left. see pic below



Install the brakes, wheels/tires onto the axle and lower the car down onto level ground. Adjust the coilovers to set the desired ride height. Now, with the car on level ground, With 1 upper link disconnected, adjust the lower links evenly to the proper wheelbase, and use the upper bar to fine tune the pinion angle to 2° down. Once set, adjust the second upper bar to the proper length, swing in place – the bolt should slide right in. Double check all angles

For questions on installations please call 800-841-8188 In Illinois (847) 487-0150

