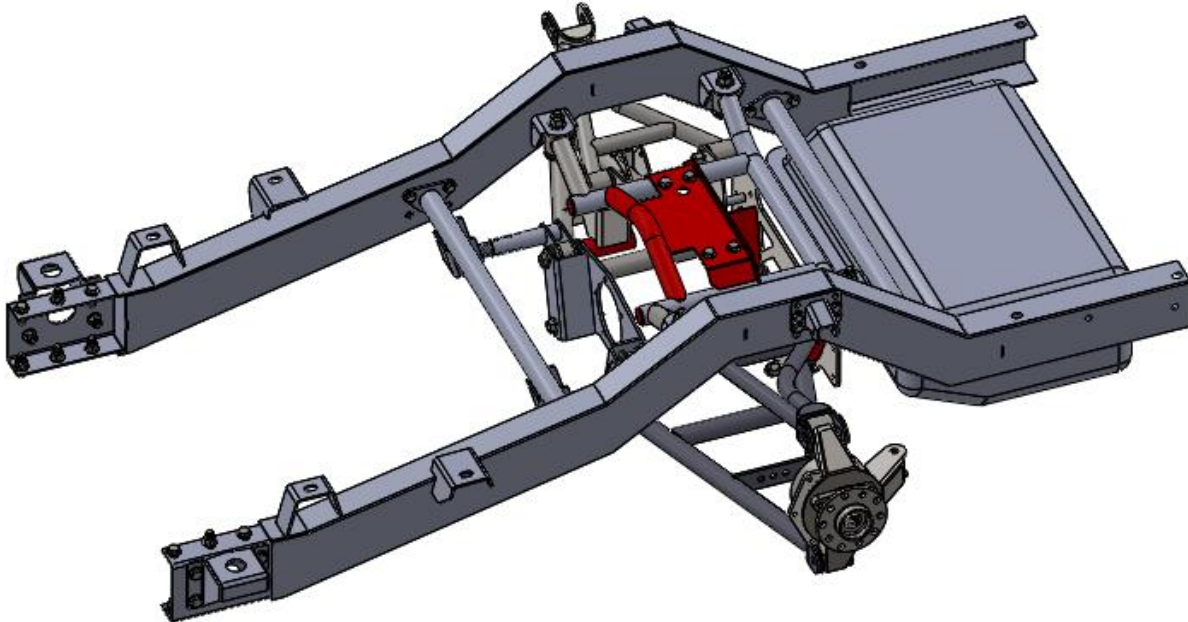




## INSTALLATION INSTRUCTIONS

### 67-72 CHEVY C10

### Independent Rear Suspension



Please read these instructions *completely*  
**before** starting your installation.

**Assemble suspension on vehicle** before powder-coating to ensure proper fitment, and to make modifications if necessary.

For questions on installations please call 800-841-8188 In Illinois (847) 487-0150



### **Main Cradle Assembly**

5/8"-11 x 4" Hex Bolt	(4)
5/8" Washer, SAE	(8)
5/8"-11 Nylock Nut	(4)
1.38 Inch OD Bushings	(8)
7/16"-14 x 1" Hex Bolt	(8)
7/16" Washer	(8)

### **Front Pinion Support Tube**

7/16"-14 x 1" Hex Bolt	(4)
7/16" Washer	(4)
5/8"-11 x 4" Hex Bolt	(2)
5/8"-11 Nylock Nut	(2)
5/8" Washers	(4)

### **Front Cross-member Tube**

7/16"-14 x 1" Hex Bolt	(4)
7/16" Washer	(4)

### **Upper & Lower Control Arm Hardware**

5/8"-11 x 4" Hex Bolt	(6)
5/8"-11 x 6" Hex Bolt	(2)
5/8"-11 Nylock Nut	(8)
5/8" Washers	(16)
5/16"-24 x 1" Hex Bolt	(4)
5/16" AN Washers	(4)

### **Steering Arm Hardware**

5/8"-11 x 4" Hex Bolt	(2)
5/8"-11 x 3.25" Hex Bolt	(2)
5/8" Washer	(8)
5/8"x1/2" High Misalignment Rod End Bushings	(8)
5/8"-11 Nylock Nuts	(4)
3/4-16 Jam Nut, RH	(2)
3/4-16 Jam Nut, LH	(2)
Rod End, 3/4" Spherical Bearing 3/4-16 RH Thread	(2)
Rod End, 3/4" Spherical Bearing 3/4-16 LH Thread	(2)

### **Uprights, Left & Right**

1/2" Cam Bolt Adjuster Assembly	(2)
5/8"-11 x 4" Hex Bolt	(2)
5/8" Washers	(2)
5/8"11 Nylock Nuts	(2)

### **Hardware Kit (Continued)**

#### **Sway Bar, Rear**

1/2"-20 RH Male Rod End W/ Stud	(2)
---------------------------------	-----

For questions on installations please call 800-841-8188 In Illinois (847) 487-0150



1/2"-20 LH Female Rod End W/ Stud	(2)
1/2" Jam Nut	(2)
1/2"-20 x 2" Hex Bolt	(2)
1/2"-20 Nylock Nut	(4)
7/8" Diameter Anti-Roll Bar, Rear	(1)
Sway Bar Bushing Bracket & Bushings, Rear	(2)
3/8"-16 x 1.25" Hex Bolt	(4)
3/8" AN Washer	(8)

### **Brake Bracket Adapter**

3/8"-16 x 1.25" Button Head Bolt	(6)
3/8" AN Washers	(12)
3/8"-16 Nylock Nuts	(6)

### **C-4 Corvette Brake Option #1:**

C-4 Brake Caliper w/ integral parking Brake	(2)
C-4 Brake Caliper Bracket	(2)
Brake Bracket Adapter, C-4 Caliper to Upright	(2)

### **Wilwood Brake Caliper Option #2:**

Wilwood Forged Dynalite Brake Kit	(2)
Brake Bracket Adapter, Single Caliper	(2)

### **Wilwood Brake Caliper and Mechanical Parking Brake Option #3:**

Wilwood Forged Dynalite Brake Kit	(2)
MC4 Mechanical Parking Brake Calipers	(2)
Brake Bracket Adapter, Dual Caliper	(2)

### **Rotor Options:**

C-4 Plain Rotors, Steel	(2)
Dimple Drilled & Slotted, Coated, Black	
Wilwood, Plain Rotors	
Wilwood, Drilled & Slotted Rotors	

### **Low or High HP CV Shafts**

Low HP CV-Shafts w/ 27 Spline Hubs	(2)
High HP CV-Shafts w/ 22 Spline Hubs	

### **CV Shaft Hardware**

M10X1.5X 80MM Socket Head Cap Screws	(12)
M10 Split Lock Washers	(12)

For questions on installations please call 800-841-8188 In Illinois (847) 487-0150



- 1) Start by jacking up your truck and supporting it on sturdy jack stands. Remove the bed. Disconnect and remove the exhaust, drive shaft, brake lines, and emergency brake cables. Disconnect the trailing arms from the cross-member. At this point the rear end of your truck should be stripped down to the bare frame. Level the truck frame. This step is important for positioning the new rear frame and having the bed aligned correctly with the cab. Remove the two rear cab mount bolts. Support the cab and remove the rear body mounts. Grind off the rivets and remove the rear cab mounts from the frame.



- 2) Mark the frame on both sides as shown in the picture. This will be the cut line. The new frame rails will slide inside the original frame rails. The four body mount holes will be used to position the new frame rails. There will be a 1/4" gap between the front frame on the truck and the new rail if the frame is cut in the correct location. Once the frame is positioned correctly, this gap will be welded and ground smooth to show a continuous frame rail from the outside.

For questions on installations please call 800-841-8188 In Illinois (847) 487-0150





3) Cut the frame and roll the old parts out of the way.



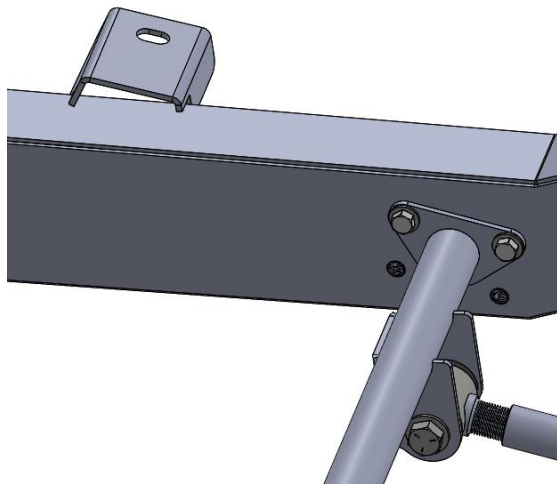
4) Position the new frame rails on the truck and level to the front frame. Drill through the upper and lower frame rails. Bolt in the original cab mount or a new Heidts cab mount (BT-643).

For questions on installations please call 800-841-8188 In Illinois (847) 487-0150





- 5) Install the front and rear cross-member tubes. The upper set of holes are for use with the drop spindle front end. The lower set of holes are for use with the standard spindle front end.



- 6) To install the front crossmember, use the  $\frac{1}{2}$ -20 Nylock Jam Nuts,  $\frac{1}{2}$  Flat Washers,  $\frac{1}{2}$ -20 X 1 Hex Bolts,  $\frac{1}{2}$ -20 X 1- $\frac{1}{4}$  Hex Bolts, and the  $\frac{1}{2}$ -20 Nylock Nuts provided. Begin aligning the holes, and bolting the front crossmember, to the brackets previously installed in **Step 4**. ***For the front-most bolt***, you must use a  $\frac{1}{2}$ -20 X 1 Hex Bolt with a  $\frac{1}{2}$ -20 Nylock Jam Nut, and washers on both sides. See **Figure 5a**. For the rest of the bolts,

For questions on installations please call 800-841-8188 In Illinois (847) 487-0150



use the  $\frac{1}{2}$ -20 X  $1\frac{1}{4}$  Hex Bolts,  $\frac{1}{2}$ -20 Nylock Nuts, and washers on both sides. **BE SURE TO ONLY FINGER TIGHTEN THE HARDWARE**, as you will need everything loose for the next step (See **Figure 5b**).

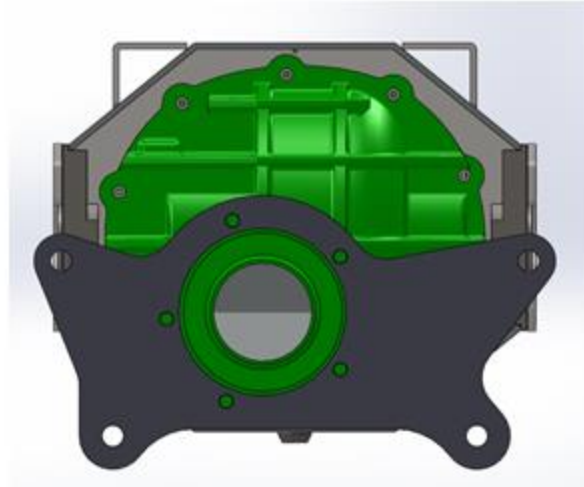
- 7) At this point the rear end housing can be assembled. Install the stub axle seals into the housing ends, one per side. Insert one seal into each side of the housing ends, with lips of the seal pointing inward, use a mallet to slowly tap the seals in until they bottom out on the shoulder of the bore. A seal installation tool will ensure that the seals are installed square and flush to the housing step. Do not tap on the seal directly, as the mallet could deform the seal, and cause an axle leak



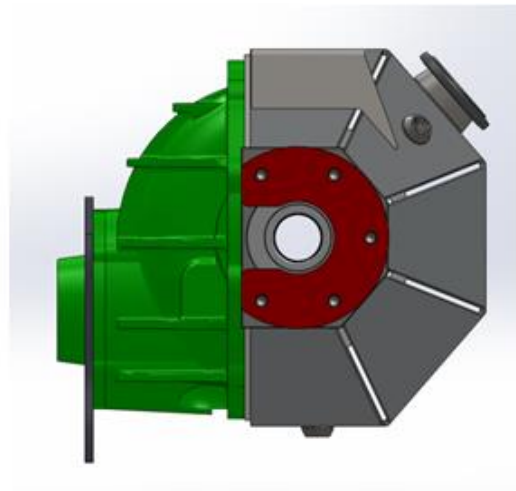
- 8) The studs can be installed next. The 2" studs will be used for the 3<sup>rd</sup> member. Place the studs in a vice with a pair of soft jaws, to prevent damage to the threads when clamping. Using a wrench, thread on the  $\frac{3}{8}$ " nylock nut until the nylock ring breaks past the threads. The nylock nut is installed on the shorter threaded end of the stud.
- 9) Install the 3<sup>rd</sup> member using the  $\frac{3}{8}$ " x 2" long threaded studs, nylock nuts and AN washers. Install using the Ford 9" third member gasket and or gasket sealer. Use thread locker on the studs. **Torque studs to 40 ft-lbs**. The front pinion plate can be installed after the 3<sup>rd</sup> member is installed. Uninstall the five front bolts from the pinion retainer cover. Install the pinion mounting plate on the pinion carrier as shown below. Use the  $\frac{3}{8}$ -16 x  $1\frac{1}{4}$ " bolts and washers that were just removed. Use thread locker on the bolts. **Torque the  $\frac{3}{8}$  bolts 35-40 ft-lbs**

For questions on installations please call 800-841-8188 In Illinois (847) 487-0150



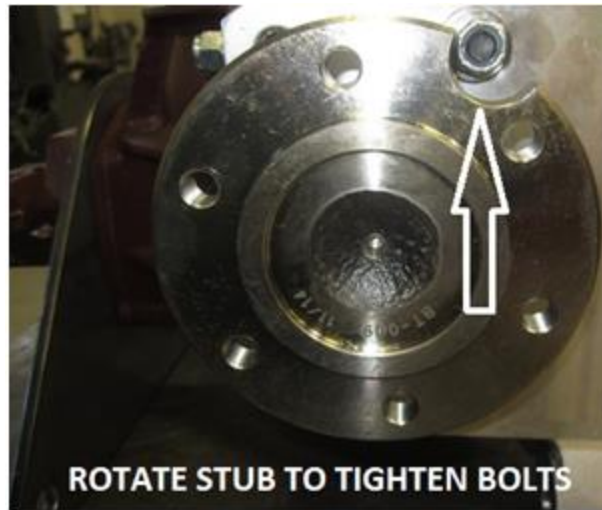


- 10) Now install the stub axle into the housing using white grease on the splines for ease of installation. The longer stub axle goes into the passenger side. Slide the stub axle into the housing until the bearing bottoms out in the housing bore, slide the retainer spacer next. Next install the bearing retainer plates using the 1 3/4" long threaded studs with the previously installed nylock nuts and washers. The machined sides of the bearing retainer plates face the center housing. **Torque the 3/8" studs to 50 ft-lbs.**



For questions on installations please call 800-841-8188 In Illinois (847) 487-0150





- 11) Assemble the bushings and sleeves into the upper cross-member mounts. Bolt the housing to the cradle and install the vent and drain plugs



- 12) Assemble the upper and lower control arms along with the front pinion support links.

For questions on installations please call 800-841-8188 In Illinois (847) 487-0150





- 13) Next install the aluminum CV adapter spacer, to the end of the half shafts and use the twelve M10 x 80mm long bolts and split lock washer to fully install the CV joint axles to the axle stubs. Use thread locker on the bolt and **Torque to 51-57 ft-lbs**. The bolts are long enough to run M10 Nord-lock washers, these are not supplied in the kit, but are a good option if you plan on racing or never want to worry about the bolts coming loose.



- 14) Install the outer bearing hub assemblies using the six M12 x 60mm long bolts and washers. If the hub assembly does not seat flush against upright, carefully open the hole

For questions on installations please call 800-841-8188 In Illinois (847) 487-0150

on the upright using a barrel sander. Use thread locker on the M12 x 60mm bolts.  
**Torque bolts to 65 ft-lbs**



15) Next insert the eight polyurethane bushings in to the left and right uprights. Then insert the four bushing sleeves, use grease to help installation.



16) Apply grease to the splines of the CV joint axles. Install the stub axles into the bearing assemblies until the CV joint axle bottoms out against the hubs. Place the nut back onto the threads and **DO NOT** tighten. Raise the lower control arm and upright until the CV axle holes align with the holes of the spacer and the stub axles. Use the twelve M10 x 80mm long bolts and split lock washers to fully install the CV joint axle and rear brake rotor to the axle stub. Use thread locker on the M12 bolts. **Torque M12 bolts to 70 ft-lbs**

For questions on installations please call 800-841-8188 In Illinois (847) 487-0150





- 17) Next use the Cam adjuster bolts to attach the upper control arms to the uprights. Make sure the Cam bolt washers fit into the "C" shaped grooves welded on each side of the uprights. At this time you can also tighten the axle nut



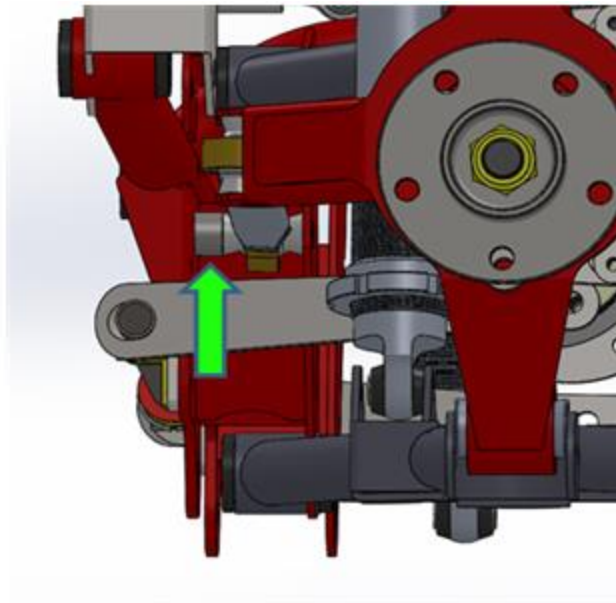
- 18) Then install the steering arms, placing the steel spacer on the rear side, and the two misalignment spacers on each end of the rod ends. Attach the steering arms to the main cradle and the uprights

For questions on installations please call 800-841-8188 In Illinois (847) 487-0150





**Drivers Side**



**Passenger Side**



**Drivers Side**

- 19) Position the IRS assembly under the truck and bolt to the 4 upper mounting brackets and the front pinion support.

For questions on installations please call 800-841-8188 In Illinois (847) 487-0150





20) Assemble the shocks and mounting brackets to the truck frame.

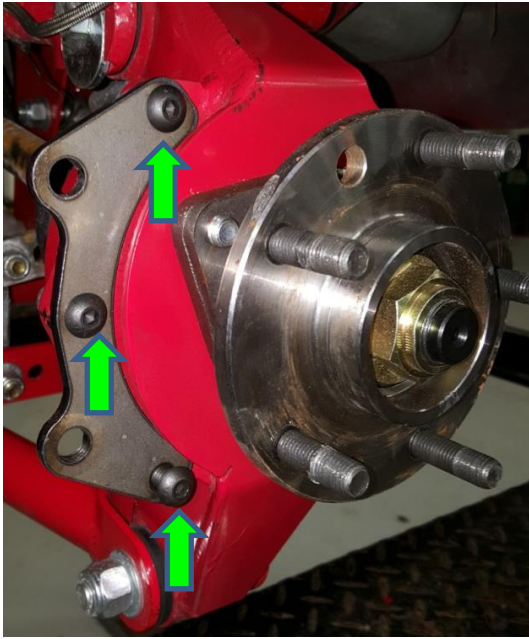
There are three different brake options that are available for the IRS. The first option includes: the C-4 Corvette calipers with integrated parking brake. The second option includes the Wilwood calipers, no parking brake. The third is option is the Wilwood brake calipers with mechanical parking brake caliper. Each option has its own brake caliper mount, make sure your kit has the correct mount.

### **Brake Option 1:**

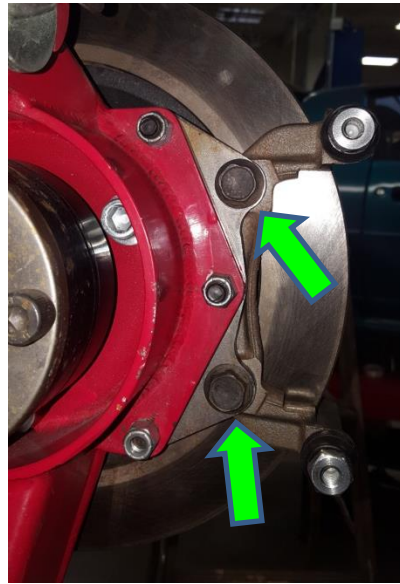
The following are instructions to install the C-4 calipers. Use the six 3/8"-16 x 1.25" button head screws, washers and nylock nuts. Fasten the brake caliper adapter to the outside side mount located on the front side of the uprights. **Torque the 3/8" bolts to 20 ft-lbs, see figure 67.** Next slide the rear rotors on over the wheel studs, then install the C-4 brake caliper brackets. Note the rear rotor are fastened though the clamping force of the lug nuts after you install the rear wheels. Use the four supplied M12x20mm Flange bolts to fasten the C-4 Caliper mount brackets to the adapter. **Torque bolts to 131 ft-lbs see figure 68.**

For questions on installations please call 800-841-8188 In Illinois (847) 487-0150





**Brake Caliper Adapter, Fig. 67**



**C-4 Brake Caliper Mount, Fig. 68**

Install the brake pads as shown in **figure 69**, note the pad with the anti-rattle clip goes on the inside of the rotor. Next install the brake caliper, make sure that the two torsional springs on the pads are preloaded evenly against the underside of the brake caliper. Note the torsional springs hold the pads down into the caliper bracket and are necessary so the pads don't get knocked out of place and wear unevenly. Use the two M8x20mm long bolts to attach the brake caliper to the caliper pin sliders. We recommend you use thread locker on these bolts or safety wire the bolts so they don't come loose. **See figure 70.**

For questions on installations please call 800-841-8188 In Illinois (847) 487-0150





Figure 69



Figure 70

### **Brake Option 2:**

The following instructions are for mounting Wilwood brake calipers. We recommend reading through the instructions that come with the Wilwood brake kit. First use the six supplied 3/8"-16 x 1.25" long button head screws, washers and nylock nuts to mount the caliper adapter to the outside side mount located on the uprights. **Torque these 3/8" bolts to 20 ft-lbs, see figure 67.**

Then slide the rear rotors on over the wheel studs. Next install the brake calipers, use the four 3/8"-24 x 1.25" long hex bolts, .063" thick washers and .032" shim washers to mount the calipers, to the caliper adapter bracket. Use the .032" shim washers to space the caliper it is positioned on center with the brake rotor. Use thread locker on the caliper bolts. Thread the bolts into the caliper brackets. Spread the end of the cotter pin in. **Torque bolts to 20 ft-lbs. See Figures 71, 72, 73 and 74.**

Reference the Wilwood instructions for correct caliper spacing diagram and verify the alignment is correct. Note each caliper adapter bracket should have two clinch nuts that are pressed into it. Make sure the clinch nuts are facing away from the center of the car. See the Wilwood instruction diagrams for more details. These instructions can also be found online if they are missing from your kit. Don't forget to slide in the brake pads and cotter pin and spread the cotter pin ends.

For questions on installations please call 800-841-8188 In Illinois (847) 487-0150





Figure 71

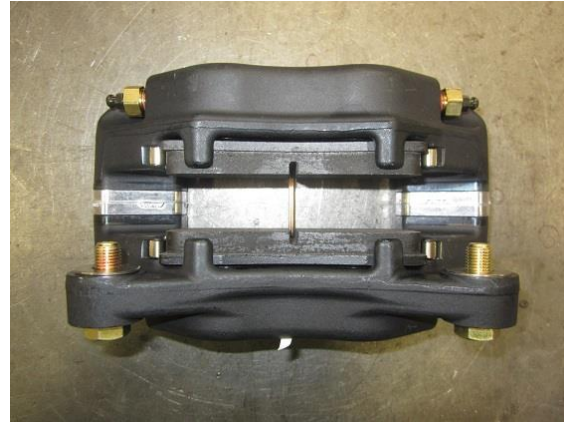


Figure 72



Figure 73

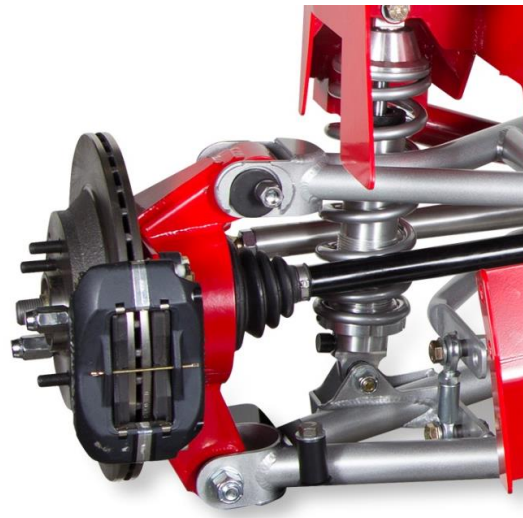


Figure 74

**Option 3:**

The third option uses both the Wilwood brake caliper and MC4 Mechanical parking brake. Both calipers mount on the same adapter bracket. Follow the instructions listed above in [Option 2](#) for mounting the brake calipers. Then refer to the Wilwood instructions for mounting MC4 parking brake calipers, see **figure 75**, pictures below.

For questions on installations please call 800-841-8188 In Illinois (847) 487-0150





**MC4 Mechanical Parking Brake, Figure 75**

### **2<sup>nd</sup> Brake Rotor Options**

If you have the dimple drilled and slotted rotors, pay close attention to the arrow on the rotors. See **figure 76** below. The wide aperture slots on these brakes are designed to draw cool air under the brake pad and rotor interface and help cool the temperature of the brake pad during heavy braking.

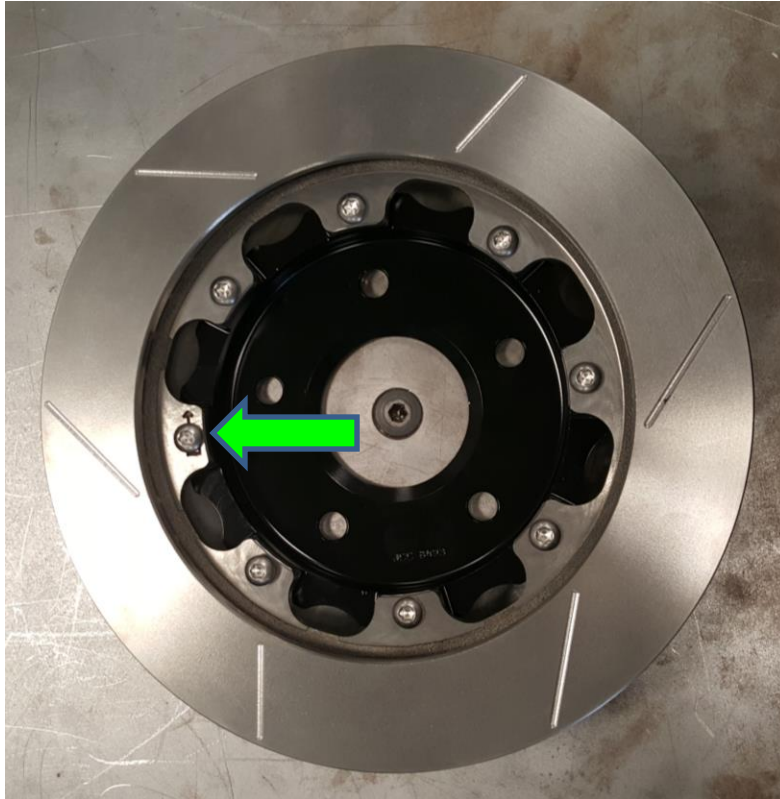


**Dimple Drilled & Slotted Rotor, Fig. 76**

If you have the Spec 37 Rotors look for the small directional arrow located on the inside of the rotor and mount accordingly, **see figure 77**. When attaching the C-4 brake hat to the rotor use removable thread locker on the 5/16-18 button head Torx head screws. Follow the recommended break in procedure provided in Wilwood instructions.

For questions on installations please call 800-841-8188 In Illinois (847) 487-0150





**Wilwood GT 36 Curved Vane Spec-37 Rotors, Figure 77**

Next you want to route the brake lines, depending on which options you have you will need to bend your stock brake lines and possibly add an extension or T-block. These parts should be available at your local auto parts store. After you have routed your brake lines bleed the brakes with a high quality brake fluid. Verify the brake lines and cables are secured down and away from any heat sources, rub/ wear points or pinch points in the suspension.

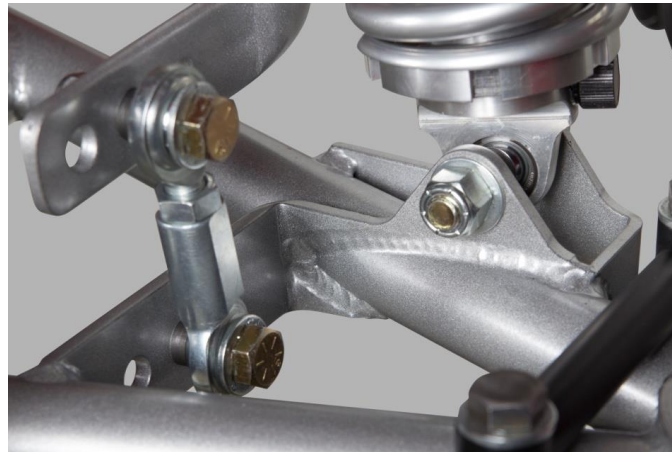
Now on to the rear sway bar, mount the sway bar bushing and brackets on the bar. Use the two rectangular sway bar spacers in between the cradle and the sway bar mounts. Use the four 3/8"-16 x 1.25" long hex bolts, 3/8" AN washers and 3/8" Nylock nuts to attach the sway bar mounts to the rear of the main cradle. **Torque the four 3/8" bolts to 20 ft-lbs, see figure 79.**

For questions on installations please call 800-841-8188 In Illinois (847) 487-0150





**Rear Sway Bar, Figure 79**



**Sway Bar, Spherical Bearing Rod End links, Figure 80**

Assemble the spherical bearing rod end links as shown in **figure 80**. There are three pairs of holes that can be used to change the rear sway bar rate. Move the link toward the front of the car softens the sway bar rate. Moving the rod end rearward stiffens the sway bar rate. Note you can vary the left and right side to get in between rates for a total of six different bar rates, one being the disconnected, i.e. no rate.

Next install the drive shaft. We suggest at this point you snug down any bolts or nuts that may have been left loose in the prior steps.

Finally, you are ready to set the alignment of your vehicle. Be sure to do so with the arms and shocks set at ride height (the lower control arms should be 1 to 2 degree going downhill towards the wheels). You may want to take you car to an alignment shop for an alignment. If you have a digital angle finder and toe plate and want to align it yourself it's pretty easy. Start by loosen the cam bolt adjuster nut located in the top upright adjuster to set camber. The cam bolts are on eccentric cams, so when the bolts

For questions on installations please call 800-841-8188 In Illinois (847) 487-0150



are rotated about the center, the cams will tilt the upright and vary your camber. When you achieve your desired camber setting; tighten the cam nut assembly down to lock the setting in place. Just be sure that both sides have equal camber settings, or the car will tend to pull to one side and have uneven tire wear.

To set the vehicle toe, loosen up the jam nut on each side of the steering arm. Turn the steering arm to set the toe to the specification below. Use the machined flats on steering arms to lengthen or shorten the link. When you achieve your desired toe setting, lock both jam nuts down while holding the steering arm across the machined flats.

Here are the recommended alignment specifications:

## **Alignment Specifications:**

**Camber: 0° - .5° Negative**

**Toe: 0 - 1/16 Toe-In**

Since you are now to the point where you have a finished, running truck it is time to test drive it. After a few hundred miles, double check the ride height and the alignment. The springs may have settled, which would change the ride height. Re-adjust the ride height before changing the alignment. After this initial setting period, the springs and bushings should have pretty much taken their final set, so you should be on your way to many miles of cruising in style.

For questions on installations please call 800-841-8188 In Illinois (847) 487-0150

