

Installation Instructions

`62-`65 NOVA INNER FENDER PANELS

Please read these instructions *completely* before starting your installation.

PARTS LIST

- | | |
|--------------------------------------|----------------------------------|
| 2) Inner Fender Panels, Left & Right | 16) 5/16 Flanged Nuts |
| 2) Hinge Braces, Left & Right | 20) 5/16 Flat Washers |
| 4') Foam Edging | 6) 5/16 X ¾" Self-Tapping Screws |
| 16) 5/16 x ¾" Hex Head Bolts | 4) ½" Hinge Spacers |

NOTE: Prior to installation, the subframe and core support should be installed and the front support tubes should be shimmed as needed.

- 1) Drop in each Inner Fender Panels and bolt to core support (in three places on each side), but keep the bolts loose.
- 2) Install the fenders by bolting them to the body (two bolts) and shim them for desired door gaps. Tighten down.
- 3) Remove the two outer bolts on the front support tubes and fasten the hood hinge braces up to the front support tube mounting flanges and on top of the fender flange (the fender flange should be sandwiched between the inner fender panel and the hood hinge brace. See **Figure 1**). Install hood hinge brackets, and move all three pieces around until bolt holes line up. Using the hood hinge bracket as a guide, mark and drill 2 holes in inner fender. (Note: The hood hinge bracket has 3 holes, but only 2 will be used. 1962 Novas have a different hole pattern than 63-65, and the hood hinge bracket fits both styles)
- 4) Trim Inner Fender Panels at the core support until core support gap is minimized. See **Figure 2**.
- 5) After panels have been trimmed/adjusted for best fitment, remove them, install the foam edging onto the firewall edge of the panels and slip them back into place.
- 6) Install all bolts loosely, and then tighten down the firewall, fender flange, and core support bolts in that order.
- 7) After the inner fender panels are in place, mark three holes on the bottoms of the panels onto the sides of the frame rails. Drill holes into the rails at these points, using a 9/32" dia. drill bit. The supplied screws are 5/16x3/4" self-tapping screws and can be simply screwed in to secure the panels.
- 8) Finally, install hood hinges with spacers as shown in **Figure 3**.
- 9) When all the panels and the hood are fitted, the panels can then be removed and painted.

For questions on installations please call 800-841-8188 In Illinois (847) 487-0150





Figure 1- Hood Hinge Brace & Fender Install

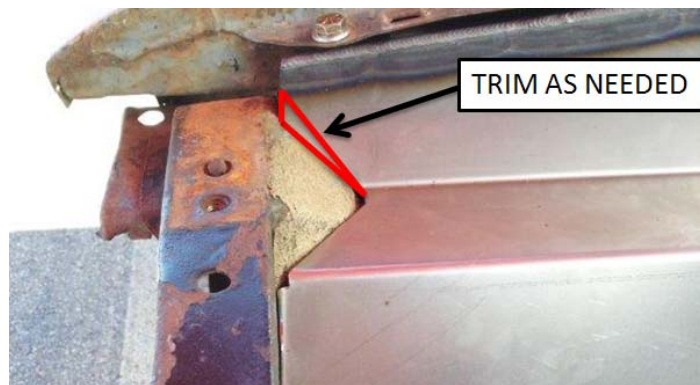


Figure 2- Trim Inner Fender Panels to Fit Core Support

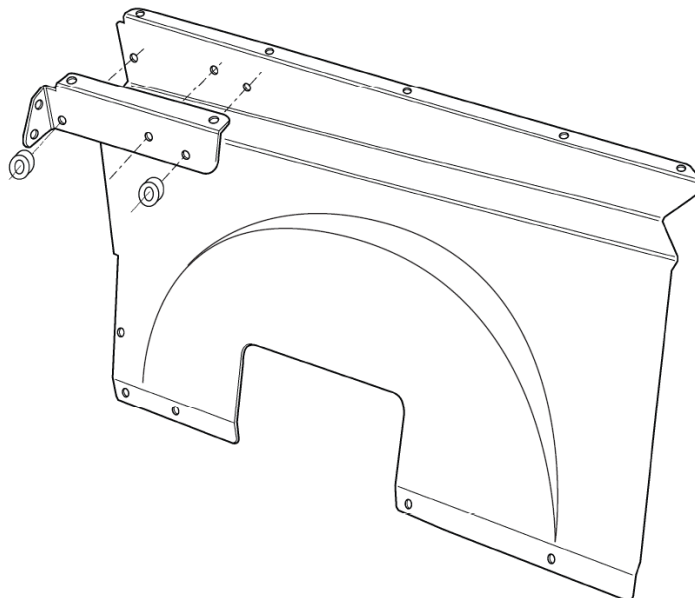


Figure 3- Hood Hinge Brace Install, showing Spacers

For questions on installations please call 800-841-8188 In Illinois (847) 487-0150